

SomnoMed How to Guide

Impressions



Impression Tray Preparations



Utilize VPS putty to customize the tray; this allows for an even amount of regular body impression material to capture full detail



Use a VPS adhesive on the trays to prevent the impression material from pulling away from the tray

Applying Adhesive - Mandible

Apply the adhesive to the internal and external vestibular areas of the tray

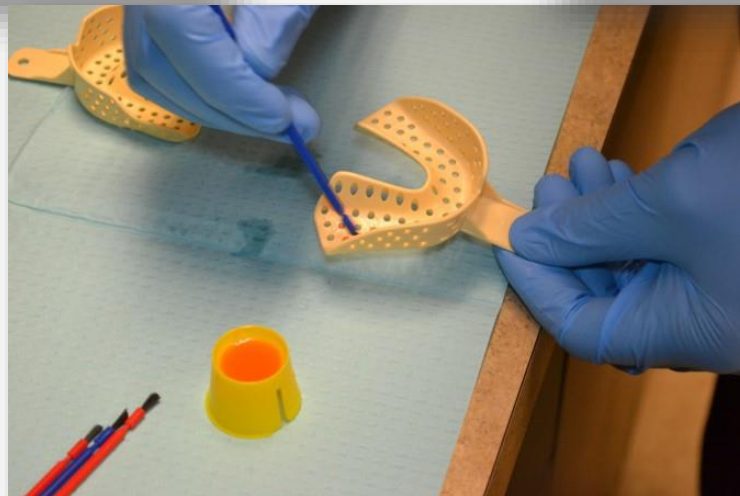


Step #1

Step #2



Step #3



Applying VPS Putty

Mix putty into a 1:1 ratio using nitrile gloves; apply putty to the tray and shape according to the mandibular form



Step #1

Step #2

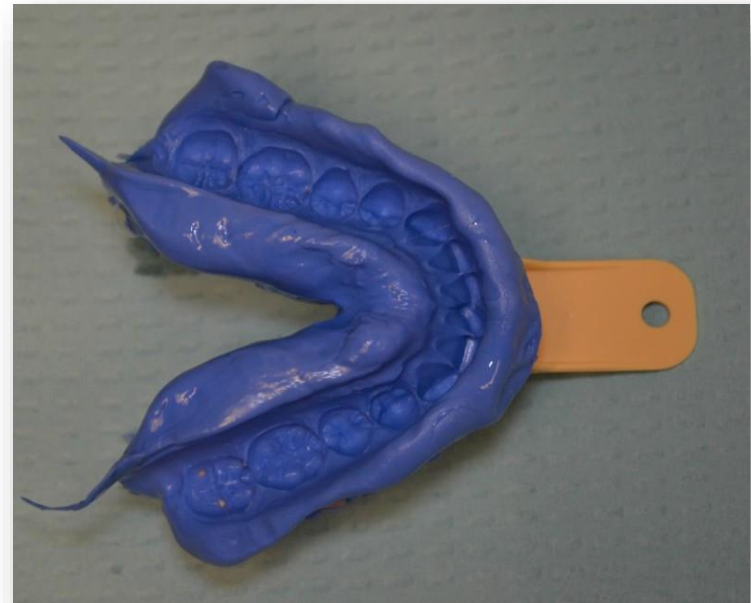


Step #3



Applying Regular Body PVS

Apply a thin layer of regular body impression material onto the putty filled tray. The putty provides pressure when taking final impressions and allows the regular body material to capture perfect detail. Notice the full extension into the vestibular areas



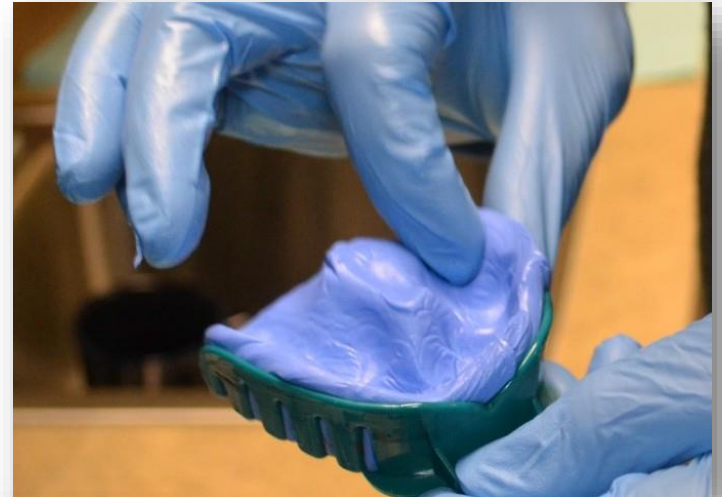
Applying VPS & Putty - Maxillary

Application of VPS adhesive to the maxillary tray; hand mixing of the putty in a 1:1 ratio and filling the tray according to maxillary anatomy



Step #1

Step #2

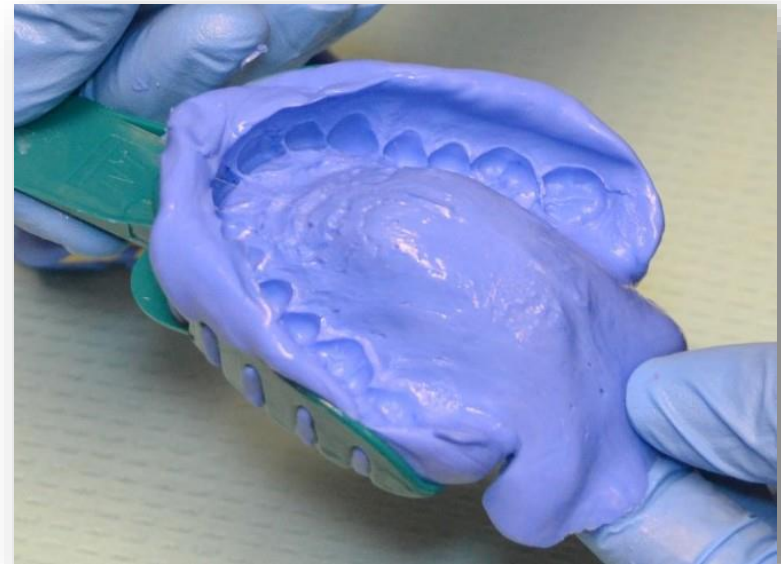


Step #3



Applying Regular Body PVS

Application of regular body impression material to the maxillary tray; the upper final impression is complete again notice the full capture of the buccal vestibular areas and rugae



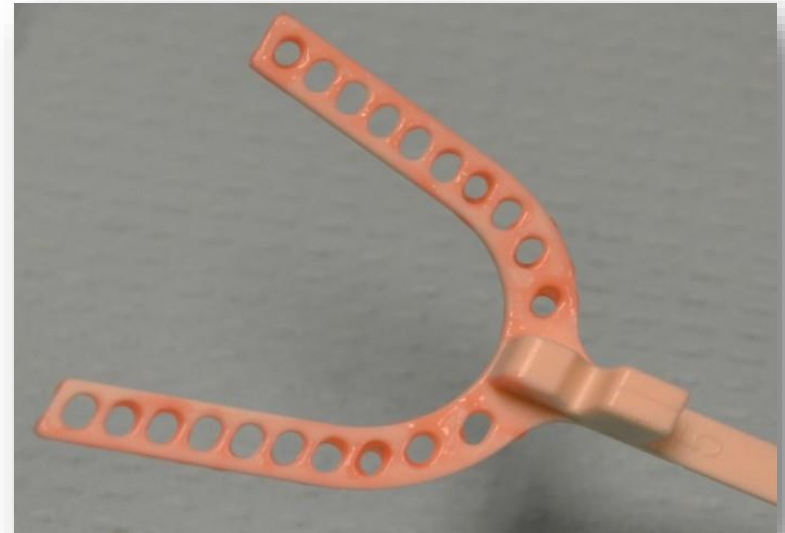
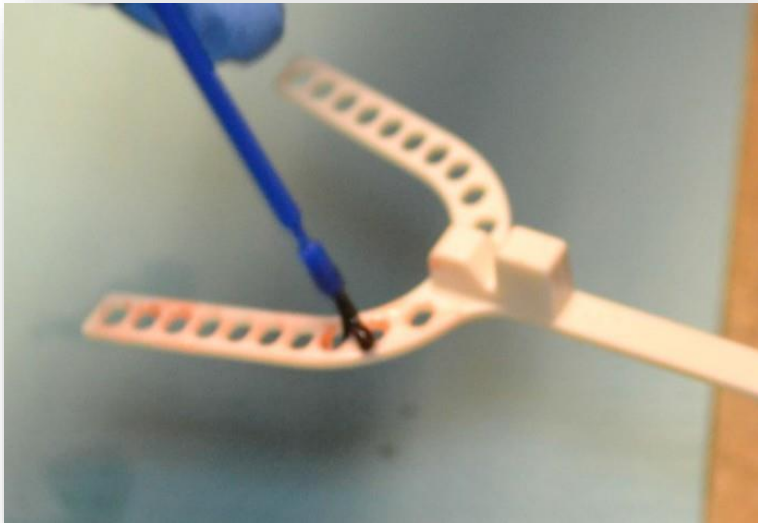
SomnoMed How to Guide

Bite Registration



Applying VPS to Bite Registration

Apply adhesive to the 5mm bite-fork; this prevents the material from dislodging; a 5mm bite fork is recommended for correct amount of vertical clearance necessary for device fabrication.



Bite Registration Position

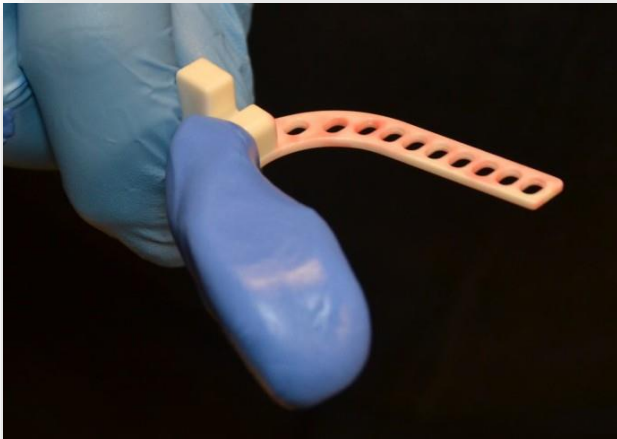


Check the patients habitual bite and maximum protrusive range of motion.

Note: A good starting position is 65% of the maximum range of motion

Bite Registration Putty

Mix putty in a 1:1 ratio and apply two sections to the 5mm bite-fork; for accuracy during our device fabrication procedures this putty material should extend from the incisal edges of the anterior teeth to the last molar



Step #1

Step #2



Step #3



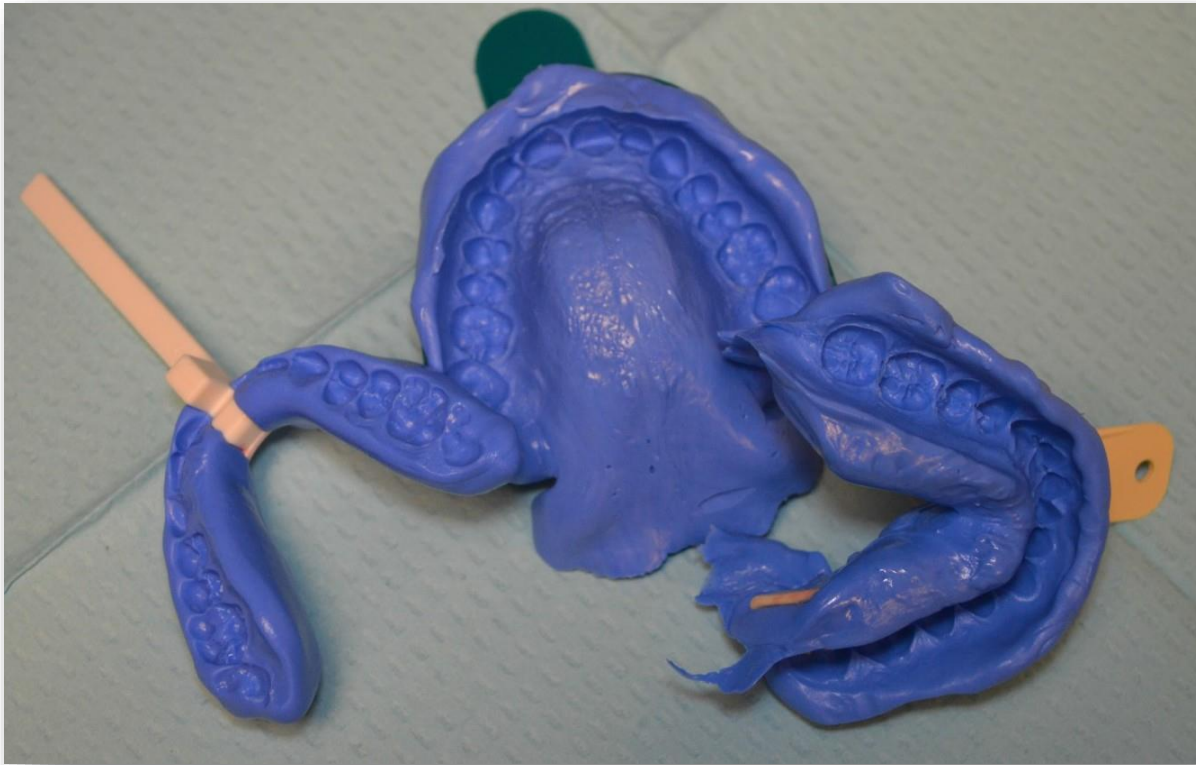
Applying VPS to Bite Registration

Instruct the patient to close naturally and gently press the material towards the occlusal table of the dentition. Notice the full detail captured in the bite registration and the full extension capturing all occlusal surfaces



Applying VPS to Bite Registration

Accurate impressions with full vestibular extensions and a fully extended bite registration utilizing a 5mm bite fork will result in excellent results





SomnoMed[®]

The Leader In COAT[™]
(Continuous Open Airway Therapy)

*7460 Warren Parkway, Suite 190
Frisco, TX 75034*

1-888-447-6673, option 4

www.somnomed.com

