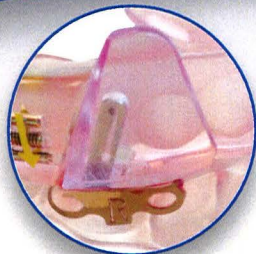
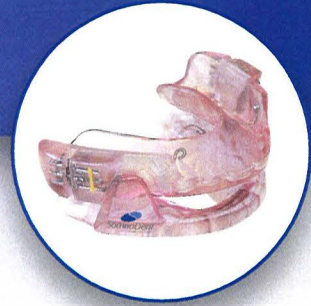


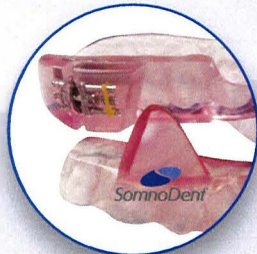
COMFORT QUALITY COMPLIANT EFFECTIVE



## Fusion™

### CUSTOM CALIBRATION

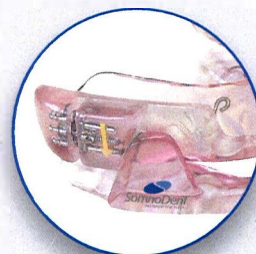
- Patient specific calibration
- 3 removable wings for 1mm of protrusion on the bottom
- Fine calibration in .1mm increments with lugs on the top
- Longer range of advancement (8.5mm) leading to fewer device resets



## Flex

### PREMIUM COMFORT

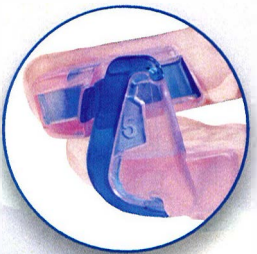
- Proprietary SMH BFlex inner liner for superior retention
- Drop in fit – even for patients with short teeth, little undercut or crown / bridge work



## Classic

### ORIGINAL INNOVATION

- Highest quality acrylic
- Medical grade stainless steel ball clasps for retention
- Lingual-less option available for additional tongue space



## G2

### LATEST INNOVATION

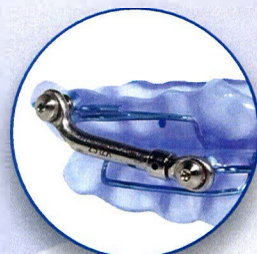
- Ease of calibration
- Wide range of calibration (-2mm to +8mm)
- Standard metal-free, also available with ball clasps



## Herbst Advance™

### VISUAL SIMPLICITY

- E0486 Medicare verified
- Visual calibration indicator makes it easy to measure how far device has been advanced
- SMH BFlex offers superior comfort and retention
- Longer range of advancement (8mm) leading to fewer device resets over the life of the device



## Herbst®

### POPULAR VALUE

- E0486 Medicare verified
- Standard telescopic mechanism (also available in Shim)
- SMH BFlex offers superior comfort and retention, also available with ball clasps

SomnoMed® & SomnoDent® are registered trademarks of SomnoMed.  
Herbst® is a registered trademark of Dentaaurum, Inc., Newtown, PA.  
SM FULL LINE PRODUCT SELL SHEET 903004revC

7460 Warren Parkway, Suite 190, Frisco, TX 75034 • [www.somnomed.com](http://www.somnomed.com)

RxOnly

  
**SomnoMed**<sup>®</sup>  
The Leader In COAT™  
(Continuous Open Airway Therapy)

**SomnoMed® offers a broad range of oral devices for the first line treatment of mild to moderate obstructive sleep apnea.**



## **SomnoDent® devices are:**

### **Comfortable for Patients**

- 88% of patients reported regular use of their SomnoDent device<sup>1</sup>
- Unique SMH BFlex technology provides unparalleled comfort<sup>2</sup>
- Patients can talk and open/close their mouths and lips while wearing device

### **High Quality**

- FDA 510K cleared and manufactured at an ISO 13485 certified facility
- Customized using the highest quality acrylic which does not discolor or attract odors
- Device life expectancy 3-5 years; and devices have a 3 year warranty against manufacturing defects.<sup>3</sup>

### **Uniquely Compliant**

- The 1st and only dorsal fin oral device with micro-recorder that objectively records compliance data
- Reports include hours device is worn and patient's supine or non-supine head position

### **Clinically Effective**

- 15+ independent studies demonstrate the device's significant clinical benefits
- 91% of patients reported improvement in sleep quality while wearing SomnoDent<sup>1</sup>

<sup>1</sup>AM / Respir Crit Care Med Vol 163. Pp 1457-1461, 2001

<sup>2</sup>SMH BFlex not available in Classic device

<sup>3</sup>See website for details

  
**SomnoMed®**  
The Leader In COAT™  
(Continuous Open Airway Therapy)